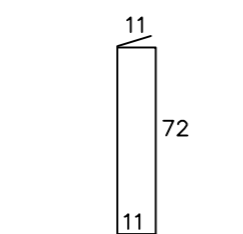
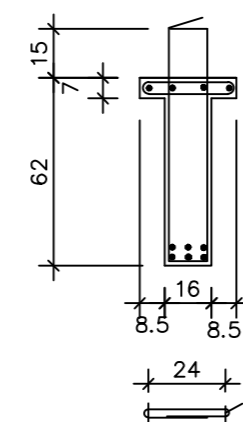
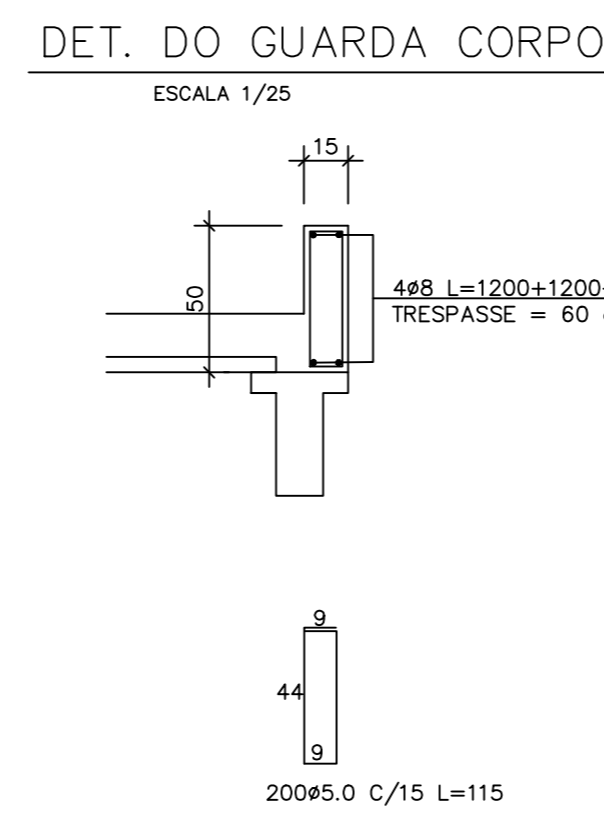


14 ESTR. #6.0 C/7.5 100	10 ESTR. #6.0 C/10 100	29 ESTR. #6.0 C/20#6.0 C/10 275	14 ESTR. #6.0 C/7.5 100
74 ESTR. #6.0 C/20 L=147 + 74#6.0 C/20 L=60			
1475			
448 L=1200		60	448 L=330
3625 L=1200 (2ª CAMADA)		100	3625 L=370 (2ª CAMADA)
3625 L=1200 (1ª CAMADA)		100	3625 L=370 (1ª CAMADA)



5 15
50
6ø10 L=1200+1200+715
TRESPASSE = 60 cm
9
44 44
14
150e8 C/20 L=125



6012.5 L=520

60

15

VIGA PRÉ-MOLDADA

60

15

54

9

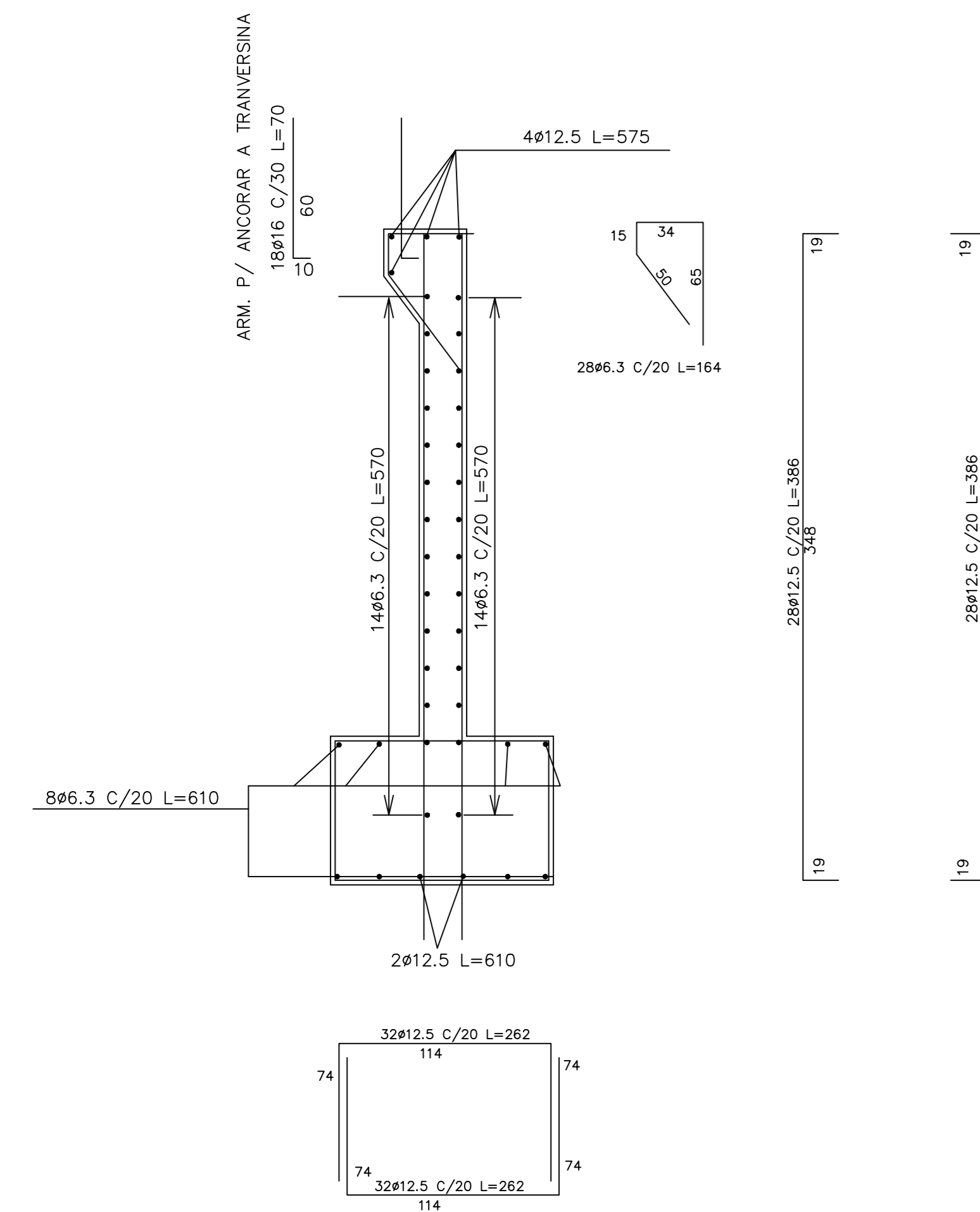
(5x) 2Ø8 C/15 L=221

Technical drawing of a mechanical part. The top view shows a rectangular base with a width of 40 and a height of 62. A section line is drawn across the top, with the label (4X) 3612.5 L=85. The side view shows a rectangular base with a width of 80 and a height of 15. The side view also shows a rectangular section with a width of 34 and a height of 54. The section line is drawn across the top of the side view, with the label (4X) 646 C₁/15 L=271.

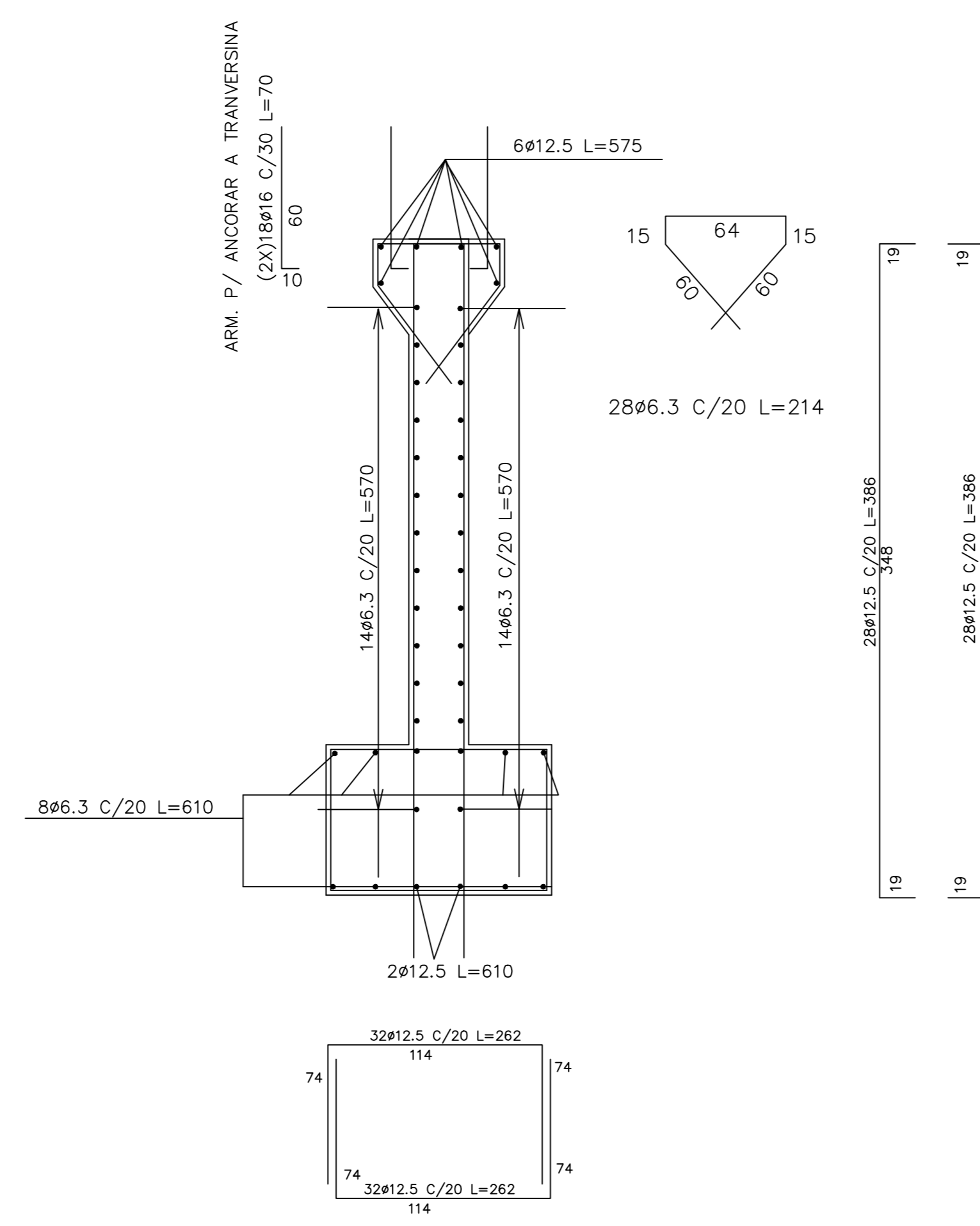
NOTAS:

1. AÇO CA-50
2. DIMENSÕES EM CENTÍMETROS, NÍVEIS EM METROS.
3. COBRIMENTO MÍNIMO DAS ARMADURAS= 3 cm e 2,5 cm para peças pré-moldadas. No trânsito No trânsito direto (laje) o recobrimento deverá ser de 5 cm.
4. CONCRETO USINADO COM FCK = 30 Mpa

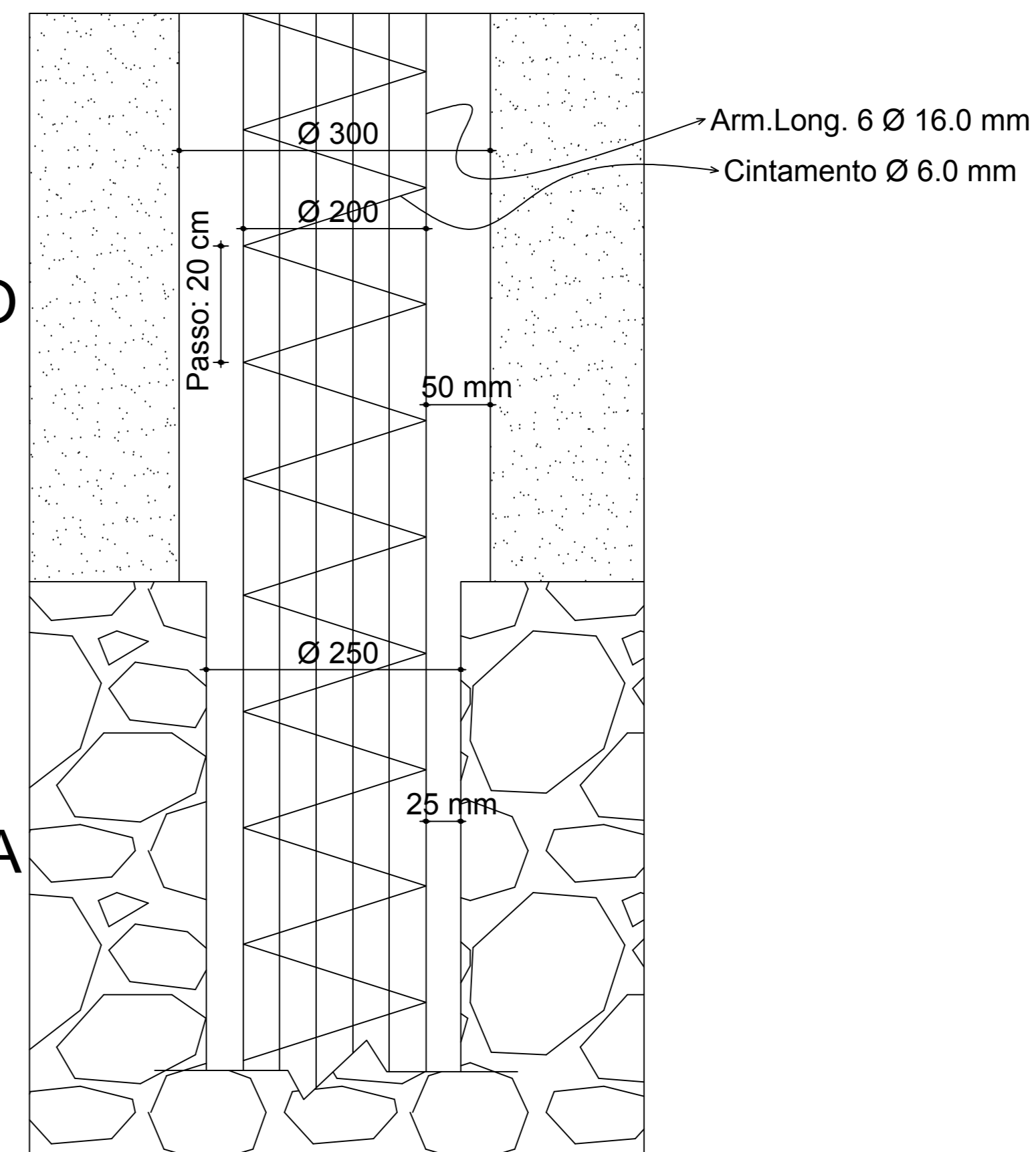
ESCALA 1/25



ESCALA 1/25



ROCHA



The image contains two technical drawings. The top drawing is a roof truss cross-section. It shows a symmetrical truss with a central vertical axis. The roof has a 20° slope on the left side. The total width of the truss is 70 units. The height of the truss is 25 units. The truss is supported by two vertical columns, each 20 units high. The truss is labeled with (4X) 3ø12.5 L=90 on both sides. The bottom drawing is a square floor plan. The square has a side length of 80 units. The distance from the center of the square to the top and bottom edges is 54 units. The distance from the center of the square to the left and right edges is 64 units. The square is labeled with (4X) 608 C/15 L=362.